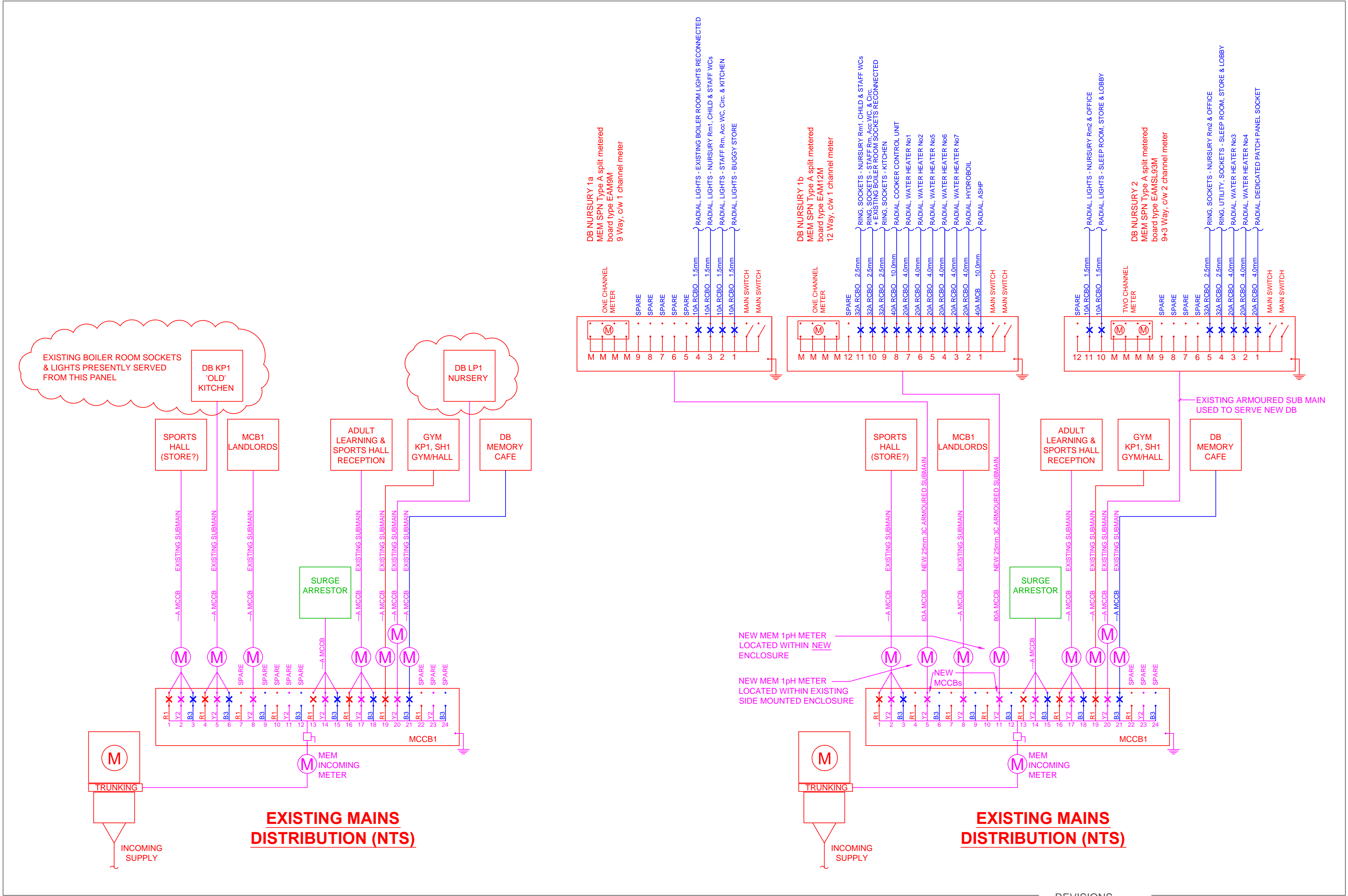
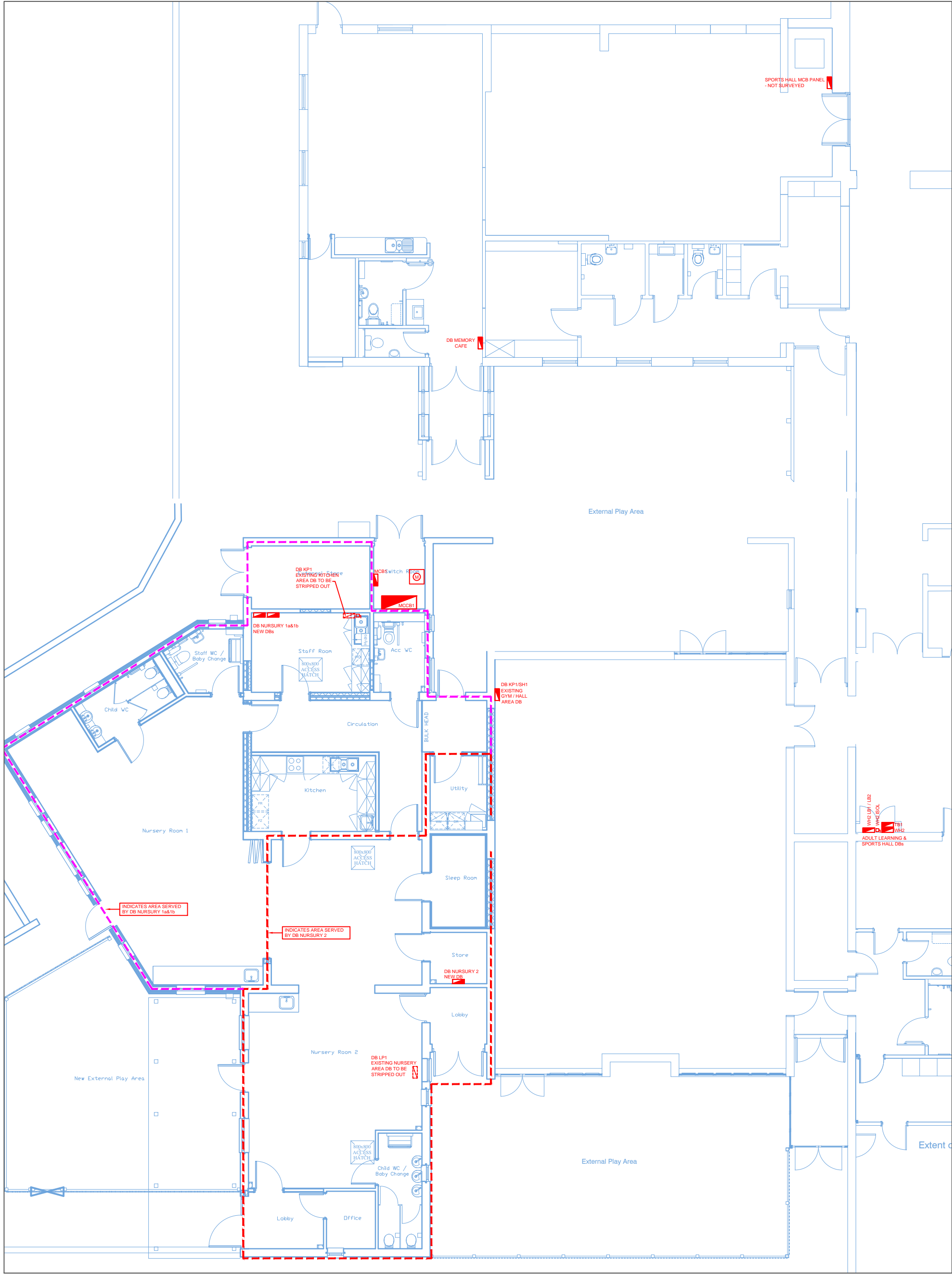


NOTE - THIS DRAWING TO BE READ IN CONJUNCTION WITH:-

- Drg Nos 170717/M/01 - 03 & 170717/E/01 - 04
- M&E Services Schedule of Work



REVISIONS	
(A)	20/10/17 TENDER
(B)	31/10/17 ARCHITECTS COMMENTS INC.

TENDER

PROJECT : REFURBISHMENT OF CARN GWAVEL PRIMARY SCHOOL ISLES OF SCILLY	
CLIENT : COUNCIL for THE ISLES of SCILLY	
DRAWING TITLE : Mechanical & Electrical Services Mains Distribution	
<div><div></div><div><div>SJH Design Services Ltd</div><div>Pentidna Barn, Prosper Hill</div><div>Gwithian, Hayle, TR27 5EB</div><div>Tel: 01736 757624 / Email: Stephen@sjhdesign.biz</div></div></div>	
Date 17/07/17	Designed by SJH
Scale NTS / AS SHOWN	Approved by SJH
Drawing No. : 170717/E/02	
Rev B	